

- GEO FLC RV
- GEO FLC ATX
- GEO FLC BIO - SR
- GEO FLC BIO - CR

# GEOMEMBRANAS

## GEO FLC RV | GEO FLC ATX

### **PVC blanket for coating / waterproofing:**

- Tanks (fish farming, chemical products, effluents, vegetable crops;
- Lakes / lagoons;
- Canals (irrigation, leaching, etc.);
- Landfills;
- Slopes / soil;
- Reservoirs (rainwater, drinking water).

### **Available in the following versions:**

- RV (black with engraving on the front);
- ATX (gray with engraving on the front and non-toxic). □

## GEO FLC BIO - SR | GEO FLC BIO - CR

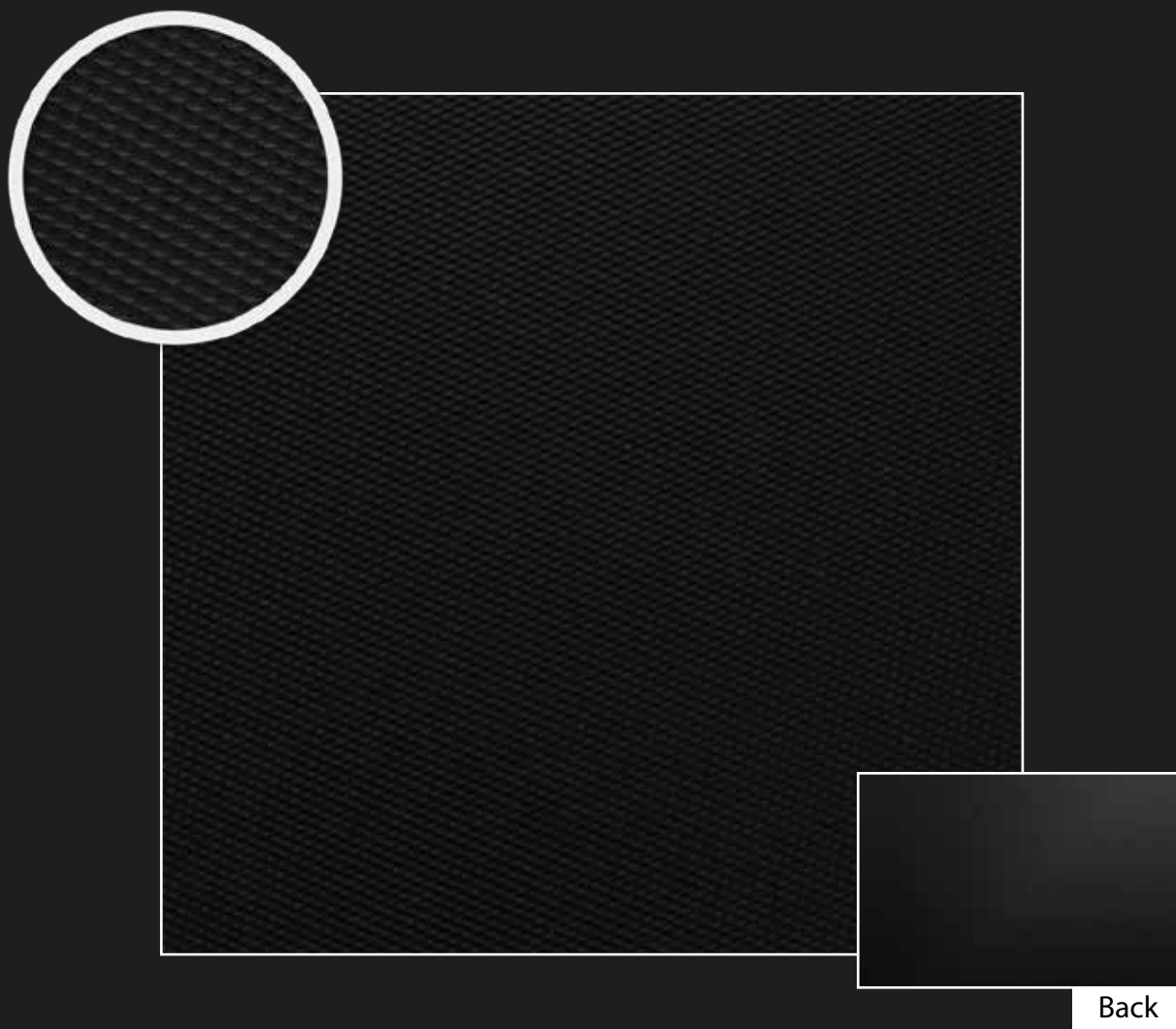
### **PVC blanket for biodigesters:**

- Rural properties;
- Agro-industries.

### **Available in the following versions:**

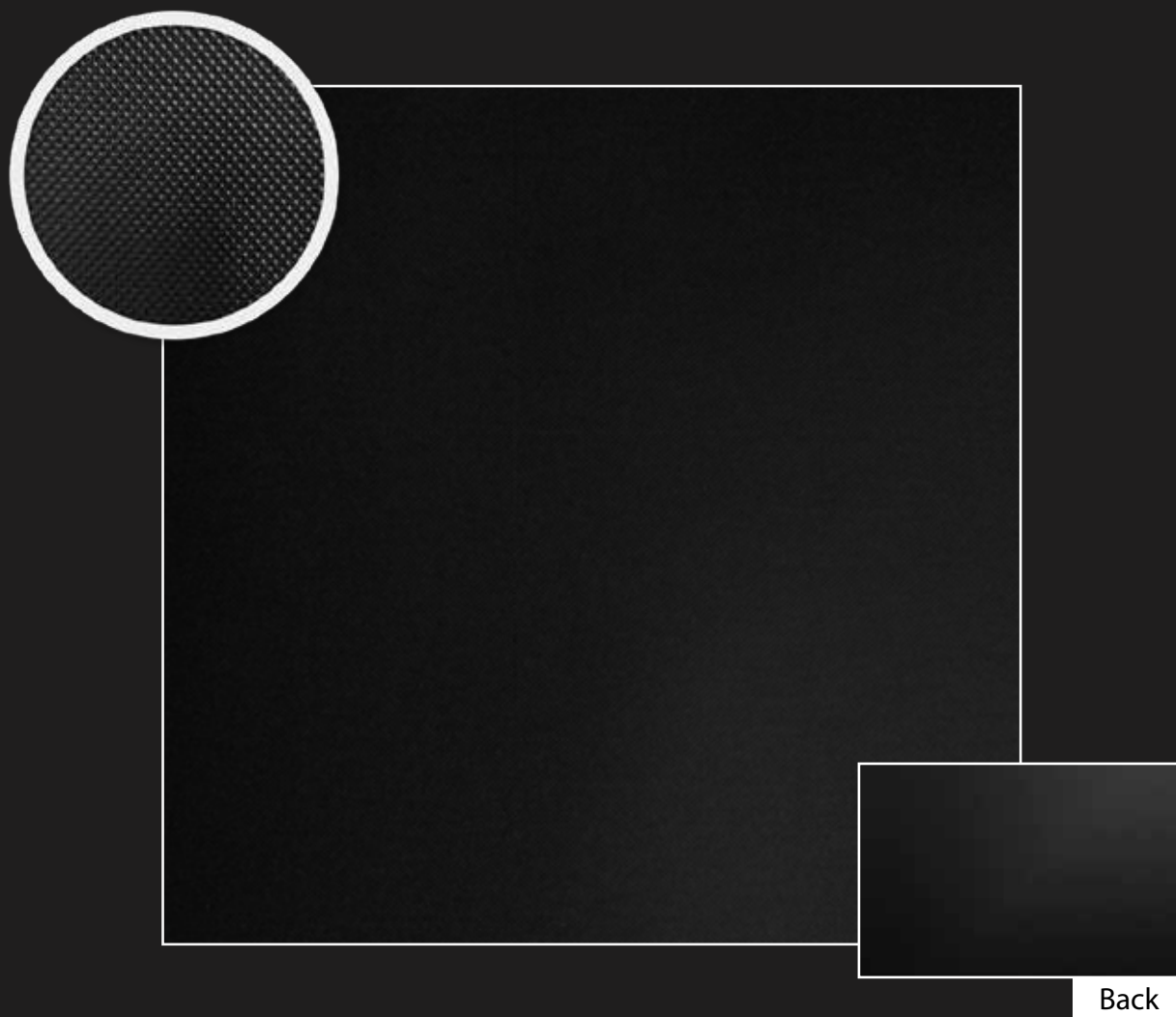
- SR (white on the front / black on the back and without internal reinforcement);
- CR (white on the front / black on the back and internally reinforced with 100% polyester fabric). □

# ***GEO FLC RV***



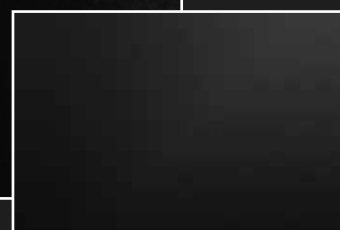
<b>Thickness</b> (mm) / ( $\pm 5\%$ )	<b>Grammage</b> (g/m <sup>2</sup> ) / ( $\pm 5\%$ )	<b>Color</b>	<b>Width</b> (m) / ( $\pm 2\text{cm}$ )	<b>Length</b> (m)
0,42	480	Black	1,80	50

# ***GEO FLC RV***



<b>Thickness</b> (mm) / (± 5%)	<b>Grammage</b> (g/m²) / (± 5%)	<b>Color</b>	<b>Width</b> (m) / (± 2cm)	<b>Length</b> (m)
0,80	980	Black	1,80	50

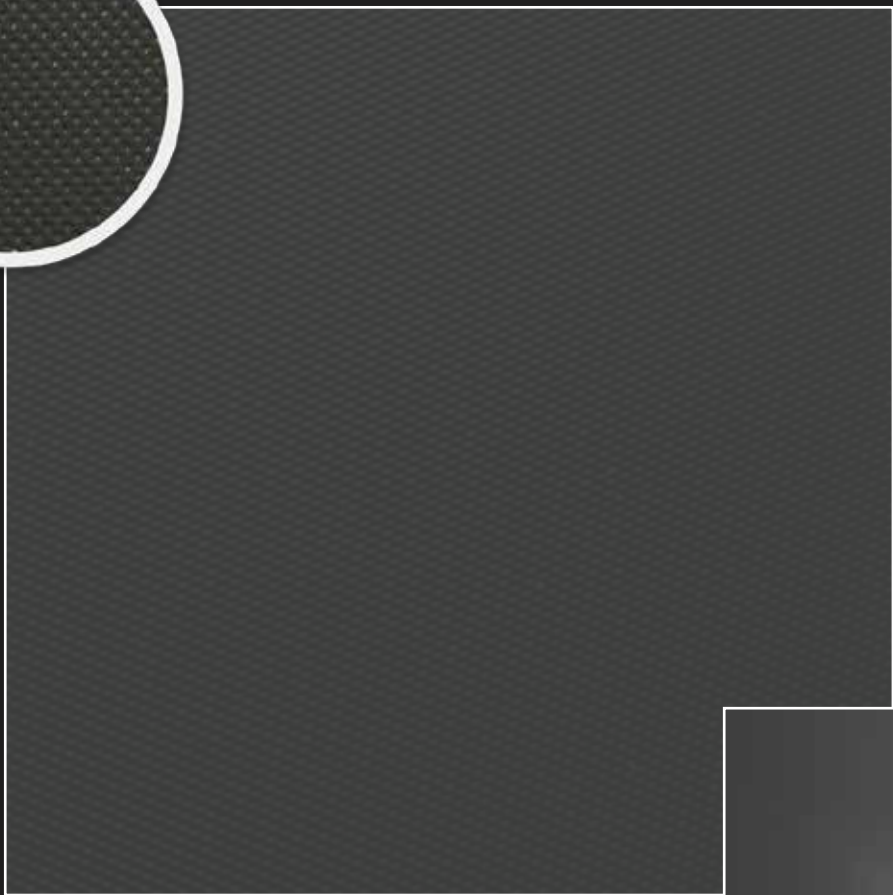
# GEO FLC RV



Back

Thickness (mm) / ( $\pm 5\%$ )	Grammage (g/m <sup>2</sup> ) / ( $\pm 5\%$ )	Color	Width (m) / ( $\pm 2\text{cm}$ )	Length (m)
1,00	1,250	Black	1,80	50

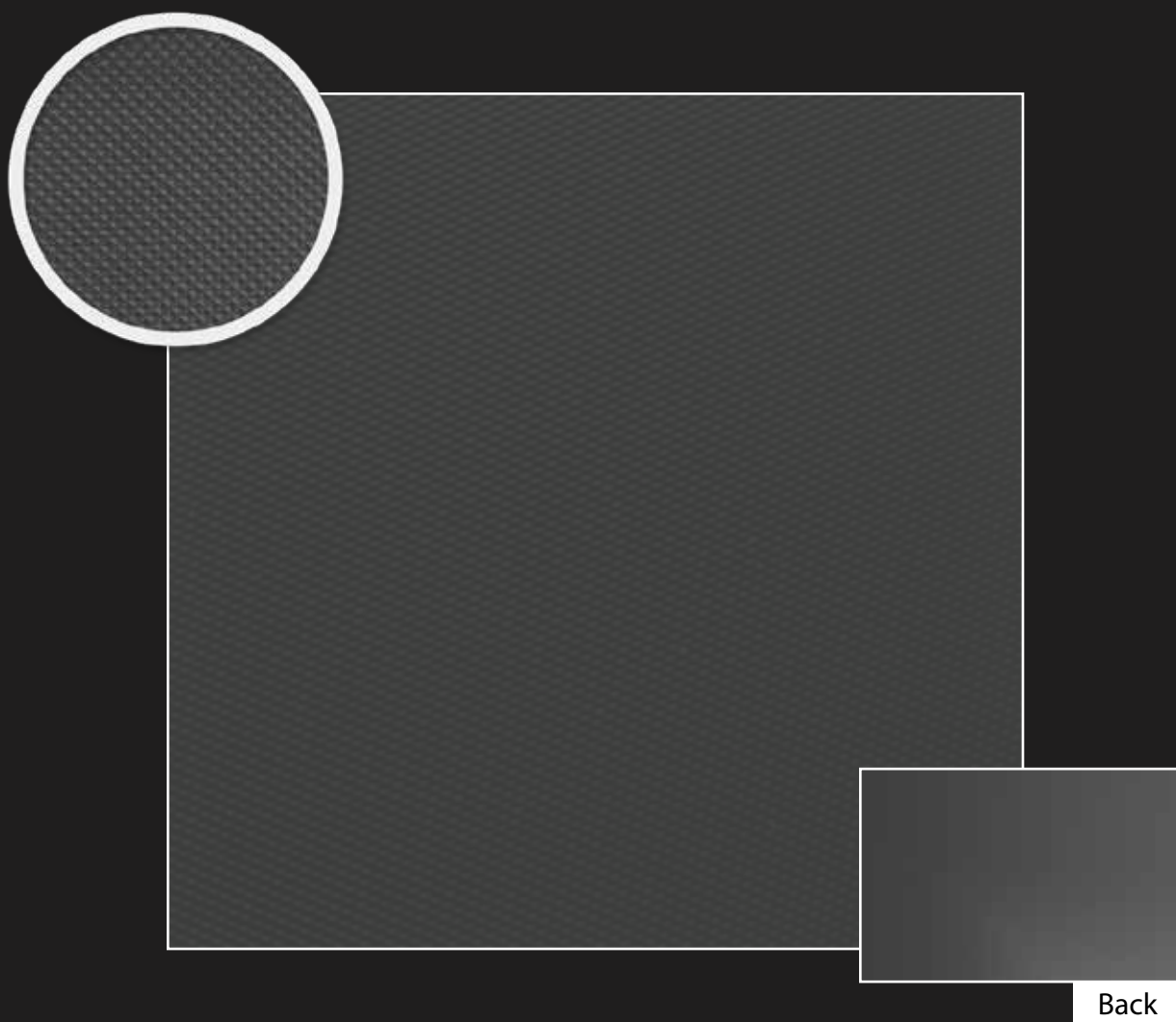
# GEO FLC ATX



Back

Thickness (mm) / (± 5%)	Grammage (g/m²) / (± 5%)	Color	Width (m) / (± 2cm)	Length (m)
0,80	1.000	Gray	1,80	50

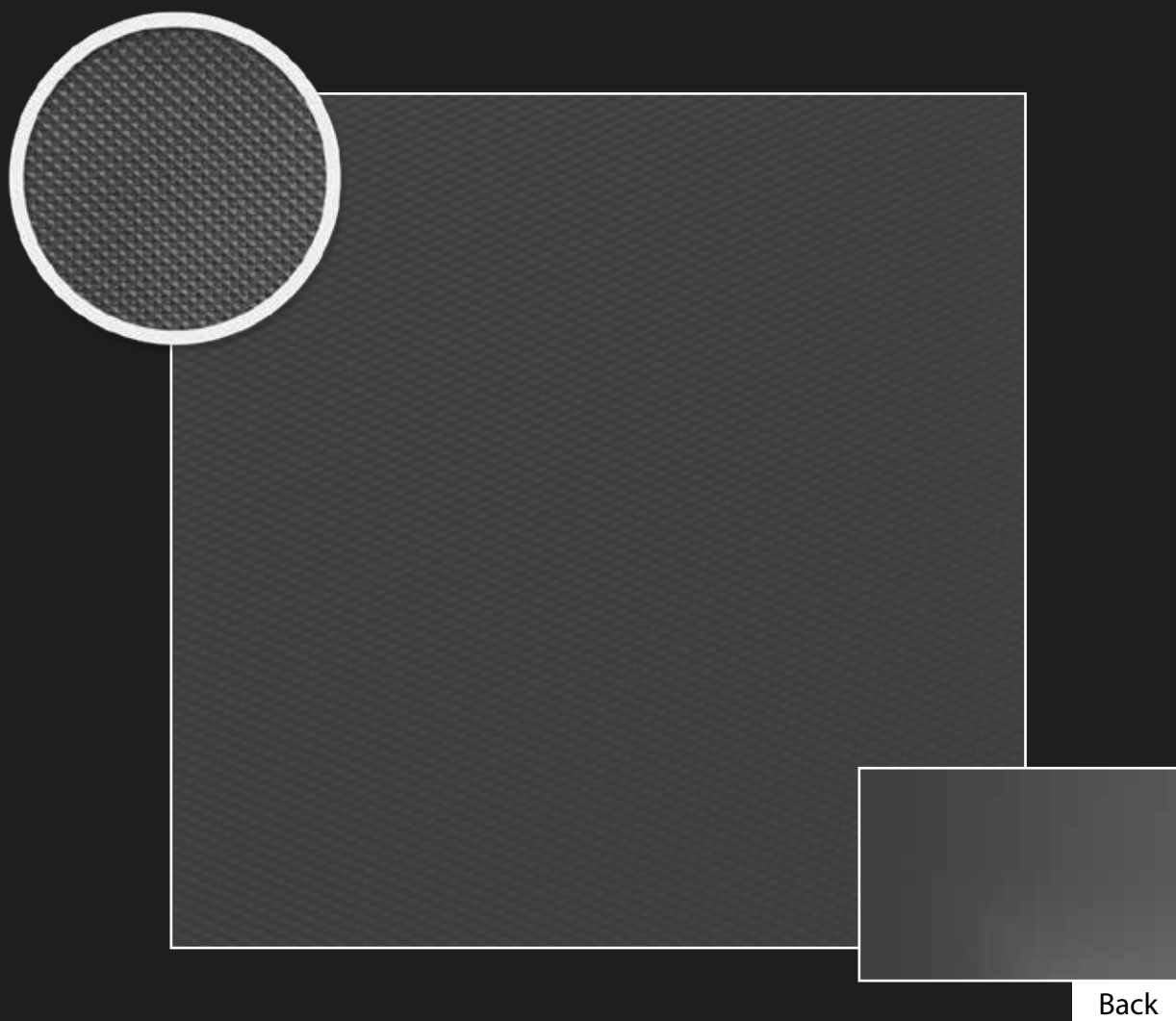
# ***GEO FLC ATX***



<b>Thickness</b> (mm) / (± 5%)	<b>Grammage</b> (g/m <sup>2</sup> ) / (± 5%)	<b>Color</b>	<b>Width</b> (m) / (± 2cm)	<b>Length</b> (m)
1,00	1.300	Gray	1,80	50



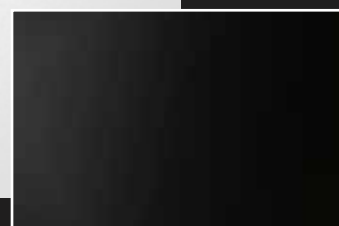
# ***GEO FLC ATX***



<b>Thickness</b> (mm) / (± 5%)	<b>Grammage</b> (g/m <sup>2</sup> ) / (± 5%)	<b>Color</b>	<b>Width</b> (m) / (± 2cm)	<b>Length</b> (m)
1,50	1.900	Gray	1,80	50



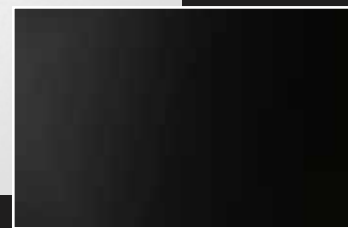
# ***GEO FLC BIO - SR***



Back

<b>Thickness</b> (mm) / (± 5%)	<b>Grammage</b> (g/m <sup>2</sup> ) / (± 5%)	<b>Color</b>	<b>Width</b> (m) / (± 2cm)	<b>Length</b> (m)	<b>Additive</b>
1,00	1.280	White / Black	1,80	50	Anti-UV

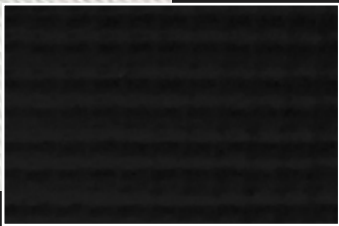
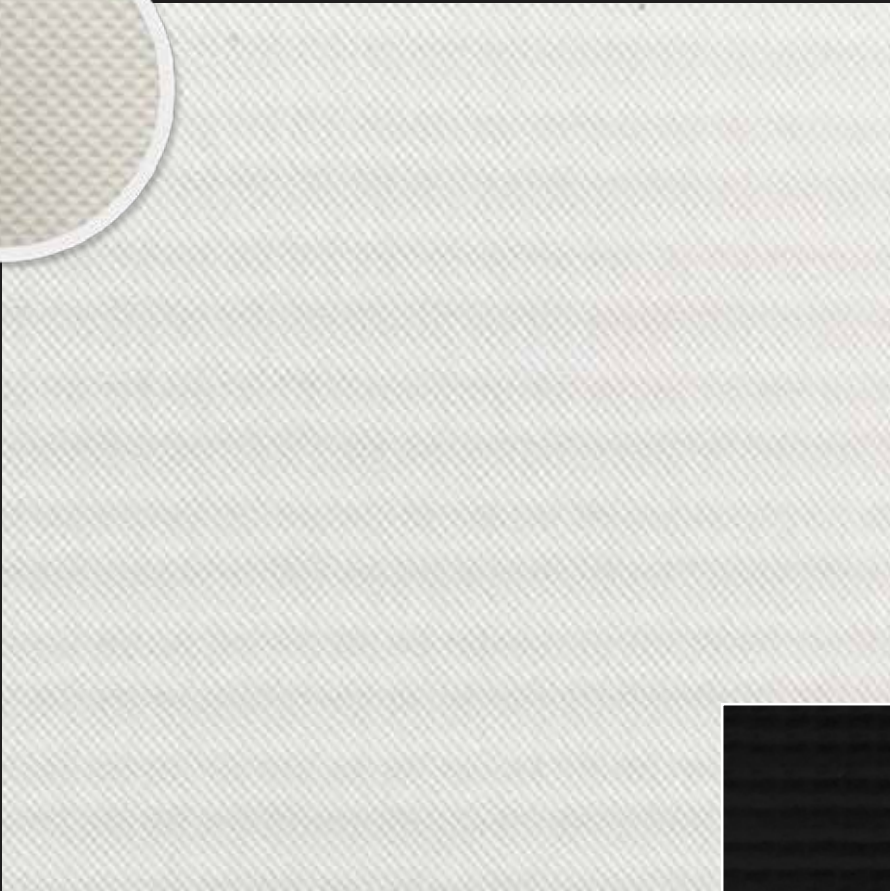
# GEO FLC BIO - SR



Back

Thickness (mm) / (± 5%)	Grammage (g/m <sup>2</sup> ) / (± 5%)	Color	Width (m) / (± 2cm)	Length (m)	Additive
1,00	1.280	White / Black	1,80	50	Anti-UV

# GEO FLC BIO - CR



Back

Thickness (mm) / (± 5%)	Grammage (g/m²) / (± 5%)	Color	Width (m) / (± 2cm)	Length (m)	Additive
1,20	1.400	White / Black	1,40	50	Anti-UV

## FEATURES



High resistance  
and durability.



Excellent  
elasticity  
and flexibility.



Easy to repair  
and maintain.



Adaptation to  
uneven terrain.



Excellent  
weldability.



Practical and  
quick to install.

